



## Water Proofing the South stage 2

WATER MAIL  
20 JANUARY 2011

### **OUTCOMES OF OCTOBER 2010 COMMUNITY BRIEFINGS**

Water Proofing the South is a localised integrated water resource management strategy based in the City of Onkaparinga. As stage 1 of Water Proofing the South draws to a close, we are commencing work on the \$30M stage 2, which aims to capture, store, treat and reuse 2.8GL (2.8 billion litres) of stormwater through the creation of an integrated system of Managed Aquifer Recharge (MAR) schemes in Aberfoyle Park, Reynella East, Seaford Rise, and Aldinga Beach.

In October 2010, we held two community briefing sessions regarding Water Proofing the South stage 2 to:

- inform communities of the intent of the project and ways in which they can actively participate in its delivery
- raise awareness of water management issues within communities including empowerment to advocate for water management issues locally
- ensure that communities' expectations are considered throughout the delivery of the project and the ongoing operation once completed.

The sessions were well attended and the opportunity to hear about the project was acknowledged by participants as a positive experience. The comments received indicated there was general support for the project and a number of people indicated their interest in remaining engaged throughout the project.

Please find attached for your information the summary report presenting the outcomes of each of these sessions. This document will be maintained on our website for the duration of the project, and will be used to inform the project team of the community expectations aspect of its delivery.

Please feel free to forward this email and its attachments to your friends and family who we may not have captured in our consultation – we look forward to speaking with them directly.

If you have any further questions, please do not hesitate to contact Benjamin Hall, Program Leader Water Proofing the South on 8384 0595 or email [wpstwo@onkaparinga.sa.gov.au](mailto:wpstwo@onkaparinga.sa.gov.au).

Yours sincerely

Bruce Williams  
**General Manager, Projects and Services**

Attached: Water Proofing the South stage 2 – community engagement project development community briefing sessions report October 2010



## WATER PROOFING THE SOUTH STAGE 2

---

COMMUNITY ENGAGEMENT  
PROJECT DEVELOPMENT  
COMMUNITY BRIEFING SESSIONS REPORT  
OCTOBER 2010

PREPARED BY THE CITY OF ONKAPARINGA  
REVIEWED AND EDITED BY BARBARA CHAPPELL  
SIMPLY SPEAKING  
*SEANACHAI*

## C O N T E N T S

EXECUTIVE SUMMARY .....	3
METHODOLOGY .....	4
COMMUNITY BRIEFING SESSION OUTCOMES .....	6
COMMUNITY BRIEFING SESSION EVALUATION.....	8
APPENDIX A – MAILOUT AREAS.....	1
APPENDIX B – COMMENTS FORM.....	1
APPENDIX C – RECORDED COMMENTS.....	1
APPENDIX D – COMMON WORD PICTURE.....	1

# WATERPROOFING THE SOUTH STAGE 2

## Community Briefing Sessions Report November 2010

---

### EXECUTIVE SUMMARY

---

Water Proofing the South is a localised integrated water resource management strategy based in the City of Onkaparinga. As the \$185M Stage 1 of Water Proofing the South draws to a close, we are commencing work on the \$30M Stage 2. ([www.onkaparingacity.com/wps](http://www.onkaparingacity.com/wps))

The focus for Water Proofing the South Stage 2 (WPS2) is the capture, storage, treatment and reuse of 2.8GL (2.8 billion litres) of stormwater through the creation of an integrated system of Managed Aquifer Recharge (MAR) schemes across the city. The objective is to offset as much as possible of the city's mainswater demand with fit-for-purpose water in a manner that also achieves other benefits for the city and our community such as improved public amenity and local biodiversity.

The concept includes:

- four new wetlands and associated MAR schemes at Aberfoyle Park, Chandlers Hill, Reynella East, Aldinga and Seaford, each with capacity to harvest, treat and store stormwater from adjacent creeks
- an extensive network of pipe transfer infrastructure across the city to efficiently distribute harvested stormwater to service local water demands ie reserves, sports fields and ovals in close proximity to where the water is harvested.

The City of Onkaparinga conducted two community engagement sessions (one in the northern part of the city and one in the south). Community Engagement Consultancy Simply Speaking was engaged by the City of Onkaparinga to:

- develop a facilitator's session plan to capture community feedback about key issues, concerns and opportunities associated with project delivery and outcomes resulting on the ground.
- facilitate community briefing sessions to provide opportunities for the provision of information about the project, focussed discussion on issues, concerns and opportunities relating to project delivery and outcomes and the gathering of input from community members.
- review and edit a summary report prepared by council staff on outcomes of the community sessions to inform briefings to tenders on the preparation of concepts for the delivery of Water Proofing the South Stage 2.

The sessions were well attended and the opportunity to hear about the project was acknowledged by participants as a positive experience. The comments received indicated there was general support for the project and a number of people indicated their interest in remaining engaged throughout the project.

The sessions also highlighted there was a general level of awareness around water issues and strong interest in the project from the local community. The preservation of the environment during and after construction, protection and reestablishment of native flora and fauna and opportunities for social amenities were strong values articulated from both the northern and southern site participants.

---

## METHODOLOGY

---

A Community Engagement Strategy for Stage 2 was prepared in October 2010 and endorsed by Council on 7 September 2010. The community briefing sessions were organised as part of the engagement strategy as follows:

- invitations to register for two community briefings were distributed to 6,494 community members within approximately 500m of each of the proposed sites. (A map of the mail out areas is provided as Appendix A – Mailout Areas).
- information was made available on council's website at [www.onkaparingacity.com](http://www.onkaparingacity.com).
- an advertisement about each briefing was posted in OnkaNews on 13 October 2010.
- information signs were displayed at each site with information about the briefing sessions.
- an article was published in the Southern Times Messenger and the Hills and Valley 20 October 2010 titled 'Waterproof Plan' which also provided details about the community briefing sessions and how to be involved.
- printed signs were placed in several community facilities such as libraries, cafés and shopping centres

A northern site briefing was held at Reynella East High School for those who are close to the proposed Aberfoyle site. The southern site briefing was held at Maslin Beach Community Hall as it was determined to be central to the proposed southern sites of Seaford and Aldinga.

<b>Northern sites</b> (Reynella East, Aberfoyle Park, Chandlers Hill) Date: Wednesday 20 October 2010 Venue: Reynella East High School Hewlett Packard Street, Reynella East	<b>Southern sites</b> (Seaford and Aldinga) Date: Wednesday 27 October 2010 Venue: Maslin Beach Community Hall 51 Gulf Parade, Maslin Beach
--	---

There were 44 people in attendance at the Reynella East High School and 46 people attended the Maslin Beach Community Hall. Participants were asked to provide their contact details and indicate if they were interested in remaining engaged in the project. A communication strategy will be developed to ensure consistent and effective communication with interested participants throughout the delivery of the project.

### Purpose of sessions

In accordance with the approved community engagement plan for WPS2, the aim of the community briefings was to capture general community comments with the hope of understanding community expectations and how these comments might be considered and responded to specifically throughout the project. The objectives of the sessions included:

- informing communities of the intent of the project and ways in which they can actively participate in its delivery
- raising awareness of water management issues within communities including empowerment to advocate for water management issues locally
- ensuring that communities' expectations are considered throughout the delivery of the project and the ongoing operation once completed
- fulfilling the requirements of the WPS2 funding agreement that requires a community engagement strategy and communication plan exist for at least the life of the project.

## WATERPROOFING THE SOUTH STAGE 2 Community Briefing Sessions Report November 2010

The briefing sessions consisted of:

- Introductions and outline for the format of session.
- Project overview through a presentation on key elements.
- Experiences and learning's through the project delivery of Water Proofing the South Stage 1 including the formation of a Community Connection Group.
- Summary of Community Connection Group activities including feedback from participants.
- Structured facilitation session to generate discussion on peoples ideas about the project including, challenges, opportunities for innovation, what they would like to see happen and what they would not like to see happen.
- Recording of all comments from participants on a laptop computer and display of the comments on screen to enable review and revision of to ensure accuracy.
- A summary of how the information from the session will be used to inform the tender briefing Opportunities for participants to identify how they would like to continue to be engaged through the project delivery.
- Feedback from the members of the Community Connection Group from WPS1 about their participation in the project.

Key topics were selected to facilitate discussion on all the project elements. Participants were invited to include any other topics they would like included in the discussion. The topics were:

- Community participation in the delivery of the project
- Reduced reliance on mains water – sustainable water supply
- Integrated water resource management & Managed Aquifer Recovery (MAR) schemes
- Harvest/capture/reuse of stormwater – water quality for coastal discharge – flood mitigation
- Wetlands – function, capacity, treatment
- Biodiversity
- Amenity – social and economic outcomes
- Distribution network – pipe transfers, service local demands – infrastructure planning

Participants were provided with comments forms and encouraged to return them to the Community Engagement Officer for inclusion in this report.

A copy of the comments form has been provided as **Appendix B – Comments Form**

---

## COMMUNITY BRIEFING SESSION OUTCOMES

---

The outcomes from both southern and northern meetings have been collated and analysed along with the information from the comment forms. Common issues and a summary of notable one off comments have been included in the tables below. A complete summary of all the comments is provided as **Appendix C – Recorded Comments**.

A word picture of the most common words captured during the discussions is provided as **Appendix D**. This can show where the general thoughts are on the project with examples such as “water” and “community” in large letters; and where perhaps more attention needs to be paid with examples such as “heritage” and “education” in small letters.

The issues and comments recorded will be considered throughout the development of the project. Responses to specific comments will be prepared as required.

### Common issues

The management of water retention, water quality, water flows, flooding, insect control, erosion and retaining a natural design for the project sites were common items for discussion during the topic of *Water Harvesting*. The role of schools in the education and maintenance of the environment was first raised during this topic. Some diverse perspective expressed on the costs and benefits of the project

Places and activities for people within the natural and developed environments such as walking trails, picnic areas, wetland; habitats that encourage natural flora, fauna and in particular “bird life”; concerns about erosion and again the involvement of schools to help develop understanding about the environment were the focus of discussion on the topic of *Amenity and Environmental Improvements*

During the topic on *Positive social outcomes and opportunities* there was considerable interest in how schools could be involved in this project in the long term and this extended to Flinders University and other levels of education. Opportunities to post information about the Kaurna cultural heritage and European heritage of the area were discussed. Safe and equitable access around the water spaces for people of all ages was raised for discussion such as good walking surfaces for the elderly using walking frames and fencing to protect children

The potential value the development of the project sites has to bring to the community was raised during the *Economic Development* topic. Discussions included sale of captured water to industry, availability of water for use on community recreation areas and reduced cost of water to the community. The use of the amenities to hold events and develop tourism for the area was discussed as a way to put money back into the local areas. Opportunities for community nurseries and gardens created by the availability of water were discussed

There was knowledge and acknowledgement of flooding issues around the project sites and interest in the capture of flood water for reuse

## WATERPROOFING THE SOUTH STAGE 2 Community Briefing Sessions Report November 2010

### Common issues

Responsible use of water supplies and local use of the harvested water was raised for discussion during the *Alternative water supply complementing development patterns* topic. Consideration for the availability and supply of water with all new developments and domestic capture of water was discussed.

There was interest in the volume of water that will be available and how far it can be stretched. The use of grey water in homes and for use on sports grounds, parks and in industry to reduce the use of mains water was discussed during the *Possible future augmentation of mains water* topic.

There was general discussion about the use of water by the community and for the environment and how that might be decided.

### Diverse Issues

Varied perceptions of flood risk amongst the group

Suggestions of damming further up the creek to ensure any diversion of water is appropriate

Purple pipe to be provided on a local scale to communities for watering gardens without a great investment into pipe infrastructure for the local community to access this water

As a resident who lives near (Aberfoyle Park) **Sauerbier** Creek, I would prefer for the water containment area to utilise the existing wide and deep channel that the creek currently runs through in the section of the creek between Hub Drive and the Football Oval (Happy Valley). If it is kept in this area, I feel that it would not interfere with the area greatly and would in fact improve it.

---

## COMMUNITY BRIEFING SESSION EVALUATION

---

### Evaluation results

Participants were encouraged to complete an evaluation form to provide feedback on their experience of participation in the sessions. In line with the City of Onkaparinga community engagement approach we seek to continually improve our processes based on the feedback we receive from participants. 12 people took the opportunity to provide feedback.

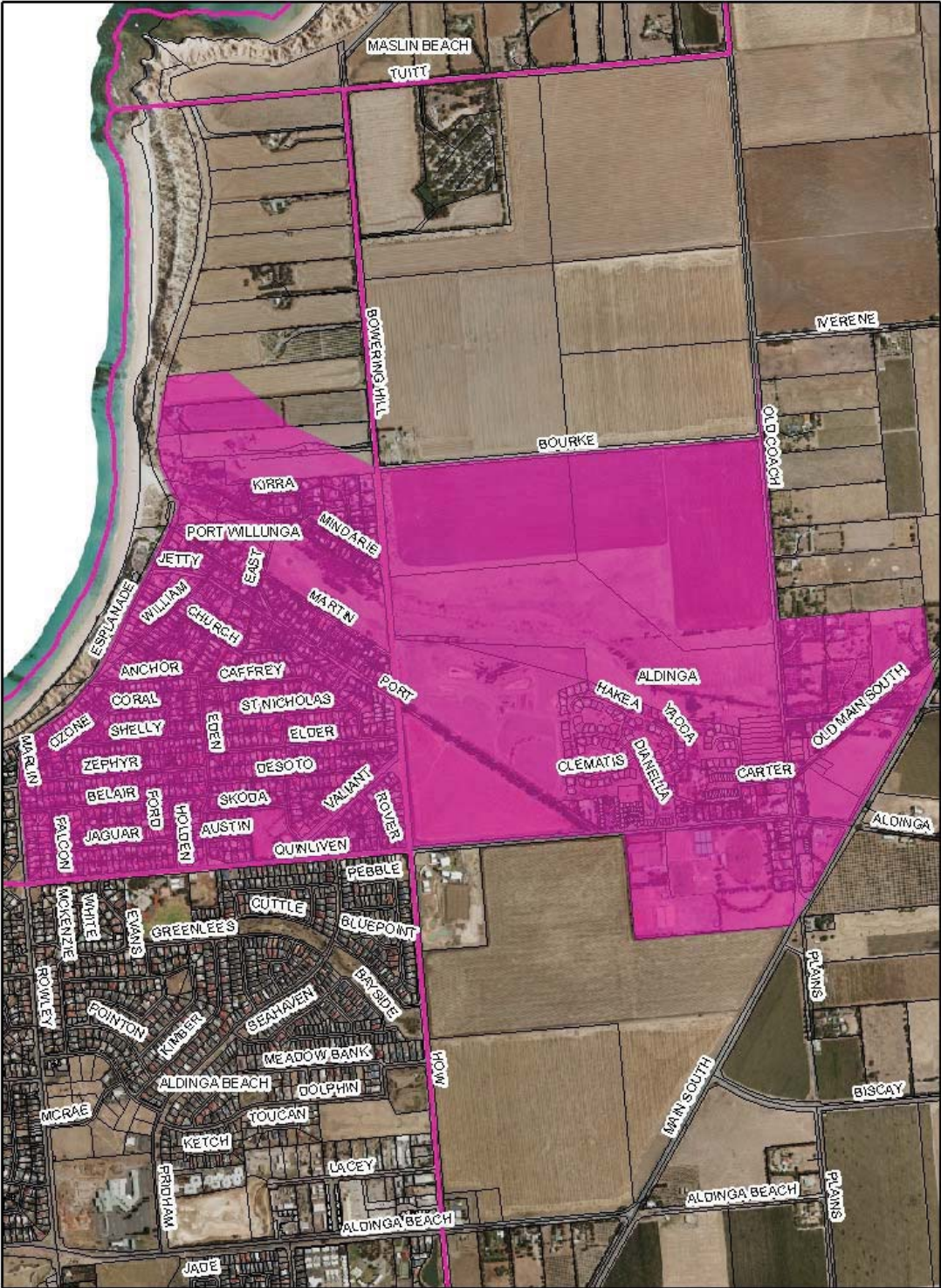
Analysis of the feedback indicated people found the sessions useful in enabling them to find out information about the project and provided sufficient opportunities to hear about key elements and project delivery. There was general agreement the information presented was clear. There were suggestions that for future engagements consideration be given to the length of meetings and that promotion of community sessions be increased.

### Comments included:

- Very informative
- Excellent presentation
- The presenters spoke clearly and explained with patience
- It was excellent
- Maybe more advertising in local shopping complex's would push the message
- I wasn't aware of the Christies Creek catchment work but the sign at Happy Valley Recreation Centre made us aware of a project starting
- Almost too many opportunities. A few people were given too much time to air their thoughts which, in some cases were almost irrelevant.
- There was too much time spent on a few key elements in the beginning and not enough later
- Congratulations to the team. The meeting was well organised, but too long for me!
- Let know finishing time
- The council person in the letter (answering machine) should ring back to confirm
- How to appeal to younger generation 25-45 to have them involved
- I thought it was well planned
- Perhaps some participants wouldn't have been interested in exactly how the MAR scheme works from A to Z (pumping, costs, machinery used). This was the sort of information that I hoped to learn.
- I'm interested more so in what happens to the area (creek) before Hub drive ie. Pine forest, BMX and bowling clubs were the creek is a lot smaller to run down

APPENDIX A – MAILOUT AREAS

WPS2 mailout area Port Willunga Oct 10













WPS2 mailout area Aberfoyle Park Oct 10





---

APPENDIX B – COMMENTS FORM



**APPENDIX B - COMMENTS FORM**  
**Water Proofing the South – Stage 2**

We want to capture community comments to understand community expectations so we are able to respond to these specifically through the delivery of stage 2 of Water Proofing the South. Please make comments about each element of the project.

**Community participation in the delivery of the project**

---

---

---

**Reduced reliance on mains water – sustainable water supply**

---

---

---

**Integrated water resource management & Managed Aquifer Recovery (MAR) schemes**

---

---

---

**Harvest/capture/reuse of stormwater – water quality for coastal discharge – flood mitigation**

---

---

---

**Wetlands – function, capacity, treatment**

---

---

---

**Biodiversity**



**APPENDIX B - COMMENTS FORM**  
**Water Proofing the South – Stage 2**

---

---

---

**Amenity – social and economic outcomes**

---

---

---

**Distribution network – pipe transfers, service local demands – infrastructure planning**

---

---

---

**Any further comments**

---

---

---

---

Please return this form to by **COB Friday 19 November** to  
Patrice Pearson  
Community Engagement Officer  
PO Box 1 Noarlunga Centre 5168  
[patpea@onkaparinga.sa.gov.au](mailto:patpea@onkaparinga.sa.gov.au)  
Ph: 8384 0116

---

**Thank you for taking the time to provide us with your feedback**

---

## APPENDIX C – RECORDED COMMENTS

---

All comments from participants were recorded on a laptop computer and displayed on screen to enable a review and revision of comments to ensure clarity. The information in this section is a record of all the comments made during both the Northern and Southern community briefing sessions. All the comments have been entered and listed as recorded directly from the briefing sessions and comment forms and not set out in any particular order to ensure an unbiased process. None of the comments have been edited.

---

### ***Water harvesting***

- Poor groundwater quality west of Bowering hill road
- Aquifer vs dams and retention basins
- Are we retaining too much water on land? Is that having environmental impact close to shore
- By reducing flow to sea are you damaging marine environment?
- Retention basins mosquito control is an issue – is that under control? Needs to be controlled
- History of flows down the creek does not support the current data
- Suggestion damming of water further up the creek to ensure any diversion that has been done is authorized to make sure the water gets where it needs to?
- Winter season where water flowed over bowering hill road was a meter deep
- Considering rain that we have had more than last few years there is very little water flowing in creek – this has changed in last 3-4 years. Would previously flood in areas and this hasn't happened
- The flood plain was deep this year
- Pipes on Gordon road are leaking out and water is draining down the cliffs which are eroding now – is that water going to be diverted back to these sites?
- Cliff stability issues possibility of pushing water back upstream
- Christies creek – wetlands are they permanent wetlands? What are the impacts or consequences
- May act like Warraparinga wetland which runs all the time
- Final figures on catchment amounts – does this take in evaporation?
- Water quality entering the Gulf – what is it going to be like provisions for water quality?
- Stopping rubbish/oil entering the ocean
- Samples of water quality – water testing at school could happen
- Will the council have an education aspect when project is developed
- Possible role of community group to educate – where is there information about that?
- Tree planting by schools – hope that kids are involved in planting activities
- Will there be sufficient options for partnerships with school?
- How much of an actual creek will be left? Concrete drain?
- Keep the creek instead of concrete drain and maintain natural environment
- Schools could get involved up stream of creek
- Aberfoyle park is a natural corridor to Clarendon – how much will block traffic of bird life in that corridor?
- Important in this location not to create environmental blocks and encourage biodiversity
- Is the group going to monitor insect infestation?
- Good to have control mechanism so people don't need to hassle council about insects

- Integrity of cycle way that runs through the reserve - access through the reserve needs to be kept as it is well used
- Need more clarification to the broader Council community on costs and benefits
- Of course
- I really think this is a good idea and appreciate my tax dollars going to fund this
- Fantastic
- It's a difficult concern to understand but obviously it works! How it is delivered is almost too clever to believe (i.e. MAR)
- More community information – seminars at all high schools to give the younger generation the picture and how this fits in to their lives and future generations

## COMMON THEMES

The management of water retention, water quality, water flows, flooding, insect control, erosion and retaining a natural design for the project sites were common items for discussion during the topic of *Water Harvesting*. The role of schools in the education and maintenance of the environment was first raised during this topic. Some diverse perspective expressed on the costs and benefits of the project.

## ***Amenity and environmental improvements***

- Plant around with no edges and include an island. This makes new homes for birds
- Wetlands I think are desirable as long as they don't grow into suburban playgrounds and spoil our quiet, village type simple lifestyle for which our area is loved – but which to being eroded. We like to be country not city.
- A wetland in this area would be great. Bird life, koalas, trees, walking paths and bike paths. Wow great idea
- Need to be a habitat for wildlife (not feral – geese, carp, mosquito fish)
- Is there any money over from stage 1 left? On the Southern side of CFS station wetlands have a lot of bird life there and nursing home wants to be able to sit near wetlands – can we provide seats and tables?
- Is there plans to make these wetlands similar to Laratinga Mt barker wetlands that have bird life, people walk dogs on leash, walking, picnic area, toilets, ponds, routes that you can look at and walking trails
- Connectivity and amenity, for example, Christie creek to Thalassa want to walk from Willunga to coast along creek through wetlands
- Bike paths and walking
- Provision for protection for birds and fauna that are reestablished in the area from birds and cats on leads
- Have an island in the wetlands
- Seats with backs on for elderly people and others to enjoy such Woodcroft drive
- Revegetation in the areas – groundcover and layers in straight away
- Playgrounds and BBQs (gas) that everyone puts money into – always clean and under shelters
- Community wood fire pizza oven could be kept by council lit once a week with cooking classes to enjoy your community
- Potential to use any of the water to address dryness and deterioration at Aldinga scrub.

## WATERPROOFING THE SOUTH STAGE 2 Community Briefing Sessions Report November 2010

- Cliff damage north of Gordon Road at Aldinga Beach Road north (lower). In drought the weeds that were along cliffs had died and they hadn't regrown. The top of cliffs where re-planting could occur and be watered with this water
- Can cliff stability be addressed? Water coming through middle of cliff, 3 years ago council put water pump in middle of Esplanade near Gordon Road and are collecting the water
- Procedures in place for vandalism as the construction happens
- Not to have concreted stream so wetlands become a natural looking environment
- Public access to area – is it going to be accessible through day time?
- Introduction of solar power lighting for paths could address vandalism issues
- Light is a form of pollution and can have adverse affects on the wildlife. Need to have dark at night and a good balance
- Carpark at Port Willunga – striking that balance
- A spot that was conducive of theatre style entertainment for people to go
- How can horses fit in with the whole of the scheme?
- The horses are part of the community and environment to be considered
- Could be used for schools daily studies of plants and animals
- Need to explain gains
- I'm sure local schools would get involved with planting etc as well as local residents
- Need to increase amenity improvements through this scheme
- Improvements are desirable of course, but I'm sure this will be addressed in any case
- Provenance planting and local grower

### **COMMON THEMES**

Places and activities for people within the natural and developed environments such as walking trails, picnic areas, wetland; habitats that encourage natural flora, fauna and bird life; concerns about erosion and again the involvement of schools to help develop understanding about the environment were the focus of discussion on the topic of *Amenity and Environmental Improvements*.

### ***Positive social outcomes and opportunities***

- Stage 1 signpost to tell people the story about how we are capturing water and is important to raise awareness and educate tell story of water and the land of Kaurna and European settlement and their story
- School children involved in planting projects
- Flinders Uni to be involved and what about other levels of education could be involved in the project?
- Shipwrecks at Port Willunga. They need to be documented or where the Chinese got shipwrecked etc.
- Needs to link into cliffs, beach, caravan park site, integrated and linked and all planned together
- Information boards
- National park in Dimboola have examples of signposts linked to township and other areas
- Clare and Burra have a heritage trail that connects other wetlands to ours
- New visitor centre at Salisbury like the boatshed
- Wheelchair access, frail and walking frames and a good walking surface
- Hart Road wetlands have been done well with ramps

- Aldinga and Port Willunga footpaths are inadequate
- Creating a safe environment for children where they can explore and play safely
- Perimeters of wet areas need a non slip perimeter so people don't slip
- Dog walkers need a place to walk dogs and let them have a good run
- Carrackalinga drive needs to be safe for the elderly and people with scooters
- Continuation of children's forest
- Is there a way to have cycle paths and dog parks to be integrated in the larger area?
- Increased the distances that you can walk to make more paths that are cycle and animal friendly
- Open flat areas incorporated to 'kick the footy' and dedicated flat areas for ball and dog pursuits
- Proper amenities related to the project eg. Carparking, bins etc incorporated into design
- Support from the Council to community groups to support and maintain the environment
- Horse riding trail through the Reynella East site that should be considered.
- Correct foliage to complement the environment that we live in
- Wetlands promoting the idea to make it look attractive and we want natural foliage that is suitable for long term
- Will the whole thing be gutted? eg little fig tree to stay
- Birds that have habitat there now such as nests etc. Before any trees are taken out consider birds and koalas
- Community hall, meals on wheels and child care centre and kindergarten nearby
- Look at buildings and facilities in the area that may be impacted
- Motorcycles, quad bikes and 4WD will need some vehicle restrictions early on as it is illegal
- explain how these benefits the broader council community
- Having a good walking/bike track would enhance the area
- Great
- Great outdoor learning areas local students
- There were a few suggestions that were over the top. (e.g. lights at wetlands) and some would involve enormous expense
- Installation of adult play/exercise equipment (in old Port Willunga caravan park)
- Walking bird watching, dogs on leash, information booths

## **COMMON THEMES**

Again during the topic on *Positive social outcomes and opportunities* there was considerable interest in how schools could be involved in this project in the long term and this extended to Flinders University and other levels of education. Opportunities to post information about the Kurna cultural heritage and European heritage of the area were discussed. Safe and equitable access around the water spaces for people of all ages was raised for discussion such as good walking surfaces for the elderly using walking frames and fencing to protect children.

### ***Economic development***

- Attract tourists to trails that include the wineries and walking trails
- Subsidies from tourism associations
- Can the contractor be asked to work with local groups and are there possibilities to set up community nurseries? Lake Alexandrina have 5 community nurseries
- How much water can we sell? Sporting ovals, wineries and irrigators
- Need to let public know about savings to local community as the water starts to be captured
- Amenity is improved and is good for land value and livability

## WATERPROOFING THE SOUTH STAGE 2 Community Briefing Sessions Report November 2010

- Considering future employment, an increase in water may generate people staying in the area, which creates amenity. If you build things where people can run shows or events and people coming from other districts and the money could go back into the local community
- Food festival and film at Willunga
- If people visit to use facilities the funding model should put money back into area
- Charging for use
- Project managers involved in highway extension is making sure that the contractors they bring in on site that the equipment is it on hand or are there 4 contractors and transport costs?
- Opportunity to look at segregating heavy water use industries and servicing them with the excess water
- Ongoing cost for maintenance such as rubbish removal etc, depreciation, operational costs vegetation cost is recovered by the sale of the water so not to be a burden on rate payer
- Perhaps Willunga creek may not be best place in engineering terms might make more economic sense, improvement of area takes consideration of economic and environmental and full consultation before decision is made not to develop Willunga creek
- Reynell Winery – would they use the water?
- Happy valley oval and sporting complexes – will the system be supporting this?
- Large recreational facilities
- Torres sands winery is still there not far from proposal
- Golf courses
- Are there any local nurseries in the area?
- Nurseries left from lack of water and closed from water restrictions
- Community planting or community garden opportunities
- O’Sullivan Beach Primary School has a Stephanie Alexander program where they grow and cook food
- Project trying to get kids eat healthy
- Food Futures strategy – who knows about it?
- Water creates opportunities for community gardens etc
- Is the proposal down the track similar to Desalination plant? The cost of water is to increase and is this viable project to sell at a lower cost to community directly to household?
- Does the Lonsdale industrial sector fit into this?
- Has there been consultation with the Salisbury council?

### **COMMON THEMES**

The potential value the development of the project sites has to bring to the community was raised during the *Economic Development* topic. Discussions included sale of captured water to industry, availability of water for use on community recreation areas and reduced cost of water to the community. The use of the amenities to hold events and develop tourism for the area was discussed as a way to put money back into the local areas. Opportunities for community nurseries and gardens created by the availability of water were discussed.

## ***Flood mitigation***

- Willunga creek area there appear to be houses that are relatively low lying on northern and southern side
- Houses have flooded but levy banks have been put in
- Potential for flooding is there
- Septic tanks need to be looked at in terms of contaminating water
- At the Eastern section of Bowering hill road the sediment has accumulated and Rose's cottage sediment is 5 foot deeper now than when the cottage was built
- Must be addressed
- Flood 30 yrs ago and council did drainage so that it didn't happen again
- Flood came back to roads on either side and because areas has developed now and there are houses now where previously there may had been flooding
- Bottom of Hay street – two houses had sewerage issues
- Sewerage with high rainfall – lot of sewerage overflow impacting on water quality
- Storm water Field River comes down street fast – does that all finish in Field River then go into sea?
- Is that going to be water that will be saved?
- Will that be another catchment area at Malbec drive?
- Byards community centre does fill up
- In the future, this should include grey water and sewerage if possible
- Are these incorporate into all new land releases
- Definitely
- WOW!! I understand water in Sauerbier creek is almost pure potable water (very little pollution) why waste this precious resource?
- Salisbury rules let the rest follow
- Wonderful

## **COMMON THEMES**

There was knowledge and acknowledgement of flooding issues around the project sites and interest in the capture of flood water for reuse.

## ***Alternative water supply complementing development patterns***

- Developing head sets that develop and an education system that keeps us using water appropriately eg water tanks etc
- Not to be seen as another endless supply of water
- Personal responsibility to consider the environment that they live in
- Flinders ranges have tanks on side for hand washing and conserving water
- In future if we don't get enough rain can connection be made to the Desal?
- Comments about purple pipe possibilities can apply on a localized scale to local community for watering gardens without a great investment into pipe infrastructure for local community to use that water
- Amount of water was only 2% of what it is now – now we have 98% - less water going into marine environment
- Suburbia – development patterns

## WATERPROOFING THE SOUTH STAGE 2

### Community Briefing Sessions Report November 2010

- All this should be considered in new developments as some catchment areas are still prone to being opened to new development. Water to hard surfaces need to be considered and will infrastructure cater for it?
- New development doesn't generate established areas so there is going to be a question of whether you can actually provide if large areas owned by Housing SA that could be incorporated easily but doesn't generally happen in established houses
- Patritti winery site being developed into a retirement village and maybe they can become customers?
- Plant nursery mushroom farm similar to the old Happy Valley Council
- Glenthorn site may be sold other side of South road may need to be developed
- Why can't we assume all water mains are pink and we lay small diameter water mains?
- When you suggest it to SA water we are battling with this and Dept of health
- Down Roy Tce is pipeline for sewerage to Aldinga
- Why can't pipeline go to Glenthorn? (Marion city)

#### **COMMON THEMES**

Responsible use of water supplies and local use of the harvested water was raised for discussion during the *Alternative water supply complementing development patterns* topic. Consideration for the availability and supply of water with all new developments and domestic capture of water was discussed.

#### ***Possible future augmentation of mains water***

- Desal plant
- Domestic capture in all new developments
- Rainwater tanks etc for every house
- Need to understand the communities potential to use storm water for traditional potable use
- Make sure it is safe for what your planned use is
- Recycled treated water for civic parks and wineries
- Bottle it and sell it!
- Local businesses that could use the water
- Seaford Meadows – grey water installed into our homes
- Can use water for sporting clubs, bowling clubs
- Recreation, parks and gardens
- Is there going to be enough mains water if you supply to golf courses, industries – is there going to be enough to do this? Drinking quality?
- How much are we going to have left?
- The water catchment that the project is about and when Council sell this off to industry, golf courses etc will there be any water to think about drinking quality water?
- Reservoir treatment facility
- Very important
- Need to inform public how it is being utilised and what the benefits are
- Water to Campus school, Retirement village maybe or Council reserves near by?
- Best idea ever heard in years why pay SA water big money (Mr Rann get stuffed)

- A great scheme. High time. Council regulations need changing also
- Ideas, pervious street gutters. Roof water used in yards, down pipes not to street, car parks designed to soak water into soil
- Great
- Would it be possible to encourage industry to use this water? (economic development)

## COMMON THEMES

There was interest in the volume of water that will be available and how far it can be stretched. The use of grey water in homes and for use on sports grounds, parks and in industry to reduce the use of mains water was discussed during the *Possible future augmentation of mains water* topic.

### ***System flexibility for future augmentation***

- Willunga Creek wash pool and environmental demands, lots of significant Kaurua heritage connections
- Site 3 for aquifer over Chandlers Hill Road - Is that going to increase pumping cost for short term gain?
- The future costs of the ongoing project needs to be explained if we'll be the ones left paying if it doesn't pay for itself
- In the southern area there are huge plans for population increase so they will be looking for flexibility as that area grows?
- Glenthorn potential
- Unknown factor – if we don't leave enough flexibility
- You need scope to have a certain amount of flexibility
- How long is this project going to take?
- Modern technology may see benefits for flexibility over time
- Making sure the pipe is big enough for future expansion
- You seem to have it worked out
- A problem, I should think but really important that it's done with expert cause, and only once. Get it right at the beginning
- Explained the function the two coloured pipes to separate different qualities of water and what benefits can be assumed by residents that may have immediate access and at what cost?
- Willunga site at Bowering hill road: a short (800m) purple pipe, westwards down the Linear Park, (easily buried in the drain/creek bed) could cheaply provide water to restore what once must have flowed here, enabling establishment of some tall trees on the south side of the drain.
- Pipeline good idea. Why not transfer water along Happy Valley Drive to Glenloth and then into Christies catchment area by canal and pipeline?

## COMMON THEMES

The need for flexibility in the design of the project was acknowledged as being important to allow for further expansion.

## WATERPROOFING THE SOUTH STAGE 2 Community Briefing Sessions Report November 2010

### ***Community participation in the delivery of the project***

- Letter from council
- Include the friends of Port Willunga for information sharing
- Need to explain to the broader Council community the costs and benefits to them as individuals and as a community
- Maybe 'story boards' placed in the local shopping complex i.e. Hub, Flagstaff Hill and Happy Valley or Hub Library
- I have spoken with a group of friends who use an oval for dog exercise and we really felt it was good they way this project is going
- Great and necessary
- Good participation will be a plus as long as the community understands the complexities and supports it
- Messenger
- Website not easy
- Local paper – Messenger Press
- On the coast
- Water mail – e-mail for people interested
- Grapevine
- Community centre pamphlets or displays
- Willunga Environment Centre
- Aldinga Community Centre
- Ward councillors to let us know what's going on
- Advertising – suggest you are looking for comments when advertising
- 6 monthly updates in similar forum
- Continue to receive updates
- If you belong to clubs – let people know
- Letters
- Notice board in local shopping centre
- Kids concept – educate children
- Letter did it go to householder
- With complement slips
- Email and a website – sign on Byards road – no website address
- Document on website water futures
- [www.onkapingacity.com/communityengagement](http://www.onkapingacity.com/communityengagement)

### **COMMON THEMES**

A number of suggestions were made about how council could make the broader community more aware of the project and the opportunities to provide comments.

## **Additional discussion items raised by the group**

### ***Kaurna heritage involvement***

- Information trails
- What involvement has there been through Stage 1?
- Stage 2 needs to incorporate Kaurna people
- Dreaming cycle and springs – to incorporate the significance of water
- Tell that Kaurna story – not only water but country
- Having some plaques or Tribjukki sites

### **COMMON THEMES**

Kaurna heritage to be incorporated as part of the project.

## WATERPROOFING THE SOUTH STAGE 2 Community Briefing Sessions Report November 2010

### ***Additional comments***

- Cost of the water – what is it going to be?
- Two storey concrete dwellings in front of other dwellings
- Priority of use – number one use should be to the community and their demand for water
- Community use should be number one
- Glenelg prices went through the roof when there was a demand for it
- First priority is environment
- Water bank to make sure we have reserve
- Look at surrounding businesses to see which can benefit from the water
- Ask the question
- When will this start?
- Plantings around the place has any thought been given to fire hazard – to be considered when considered when revegetating
- It's a positive thing that you are doing – water is going to sea and this is a great idea and hope it succeeds
- Documented as a positive outcome in local messenger
- River Murray debate - the efficiency in how water is put to use – whatever way it's used needs to be efficient, evaporation etc
- Capital works starting late 2011 early 2012
- Is it drought protected – what happens then?
- There will be a reserve
- Original meeting was 2007 – dam with liner at 2010
- Takes time to plan
- Do you still have a liaison officer with Aboriginal studies that checks out the area once work begins? Do you know Saubier Creek is a fault-line?
- Field River West of Expressway as storage dam?
- Trees were probably here and had been planted on the north side 20 years ago. The barren "linear Park" could become a real park with some good planting, sustained by the proposed storm water catchment/pipe
- Need to advise the community on cost and benefits
- Has there been a baseline study on flora and fauna?
- Wetland at south road intersection at Willunga creek is no longer there

### **COMMON THEMES**

There was general discussion about the use of water by the community and for the environment and how that might be decided.



